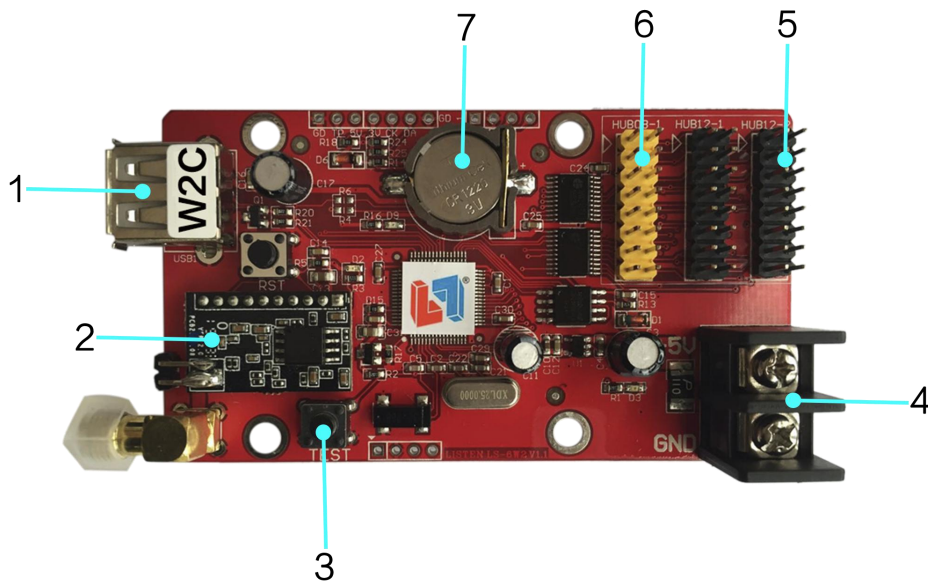


## Specification for W2C-WIFI LED Display Controllers

Ver1.0.0

2015.09.18

### Hardware :



Item	Interface Name	Description
1	USB Port	USB Port
2	WIFI module	WIFI communication module
3	Multifunction button	1.test led panel 2.reset to defaults
4	5V power supply	voltage range support 3.5V-6V
5	HUB12 Port	connect to modules with HUB12 port
6	HUB08 Port	connect to modules with HUB08 port
7	RTC button battery	RTC battery, voltage 3V

**Parameter:**

<b>Model</b>	W2C-WIFI
<b>Support range</b>	Single color:1024*16 Double color:512*16 256*32
<b>Memory</b>	2MByte
<b>Suitable for</b>	All kinds of single/double color led modules
<b>software</b>	Cluster management/multi-area display/more language
<b>Program</b>	128 programs, 16 area for each program
<b>area type</b>	graphic,text,animation,time,clock,temperature, Temperature and humidity
<b>frame display</b>	frame for program/area
<b>clock display</b>	digital clock,analog clock,positive timing,negative timing
<b>communication</b>	Wifi,USB
<b>display port</b>	1XHUB08, 2XHUB12
<b>sensor</b>	temperature sensor
<b>brightness adjustment</b>	16 grade, support auto brightness adjustment/ adjust by software
<b>remote switch</b>	support timing turn on/off , turn on/off by software
<b>working power</b>	5V <1W
<b>working temperature</b>	-40℃-85℃
<b>secondary development</b>	DLL
<b>software</b>	LED Player 6.0 APP